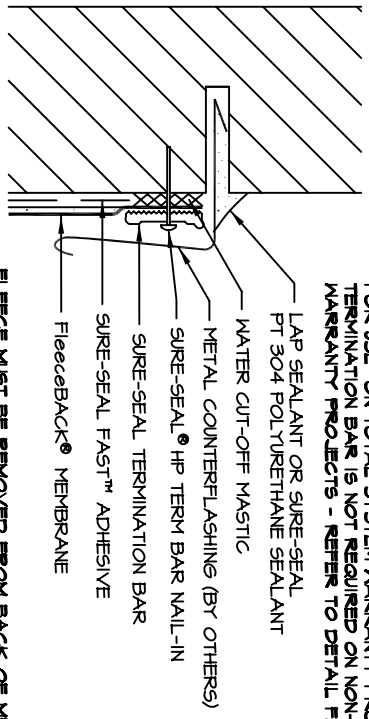


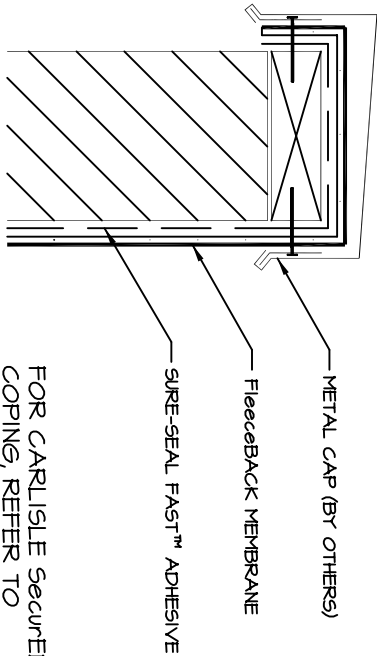
**FOR USE ON TOTAL SYSTEM WARRANTY PROJECTS, TERMINATION BAR IS NOT REQUIRED ON NON-TOTAL SYSTEM WARRANTY PROJECTS - REFER TO DETAIL FB-9-C.**



**FLEECE MUST BE REMOVED FROM BACK OF MEMBRANE SO WATER CUT-OFF MASTIC IS IN DIRECT CONTACT WITH EPDM.**

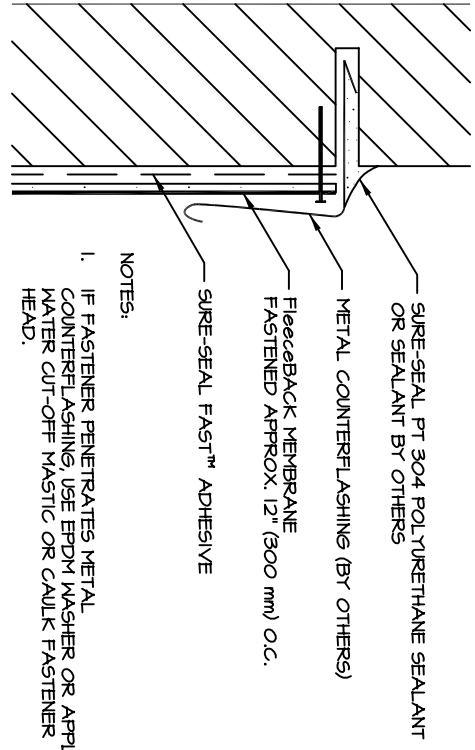
- NOTES:
1. WATER CUT-OFF MASTIC MUST BE HELD UNDER CONSTANT COMPRESSION.
  2. DO NOT WRAP COMPRESSION TERMINATION AROUND CORNERS.
  3. ALLOW 1/4" MINIMUM TO 1/2" MAXIMUM (6 TO 13 mm) SPACING BETWEEN CONSECUTIVE LENGTHS OF TERMINATION BAR.

**FB-9-A COUNTERFLASHING/TERMINATION BAR**



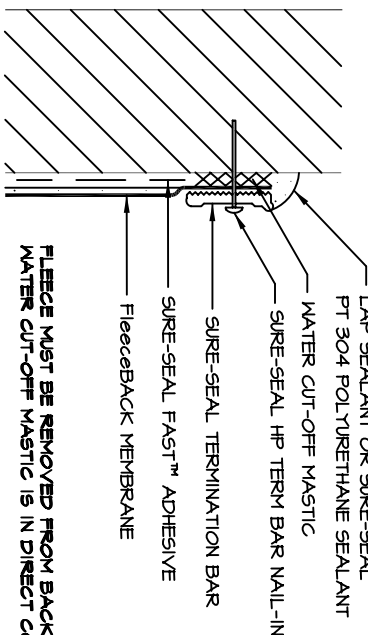
**FOR CARLISLE SECUREDGE™ COPING, REFER TO INSTALLATION INSTRUCTIONS PUBLISHED SEPARATELY.**

**FB-9-B METAL CAP FLASHING**



- NOTES:
1. IF FASTENER PENETRATES METAL COUNTERFLASHING, USE EPDM WASHER OR APPLY WATER CUT-OFF MASTIC OR CAULK FASTENER HEAD.
  2. FOR TOTAL SYSTEM WARRANTY PROJECTS, A CARLISLE TERMINATION BAR (SEE DETAIL FB-9-A) MUST BE INSTALLED BEHIND THE COUNTERFLASHING.

**FB-9-C COUNTERFLASHING**



**FLEECE MUST BE REMOVED FROM BACK OF MEMBRANE SO WATER CUT-OFF MASTIC IS IN DIRECT CONTACT WITH EPDM.**

- NOTES:
1. APPLY ON HARD SMOOTH SURFACE ONLY; NOT FOR USE ON WOOD.
  2. WATER CUT-OFF MASTIC MUST BE HELD UNDER CONSTANT COMPRESSION.
  3. DO NOT WRAP COMPRESSION TERMINATION AROUND CORNERS.
  4. ALLOW 1/4" (6 mm) MINIMUM TO 1/2" (13 mm) MAXIMUM SPACING BETWEEN CONSECUTIVE LENGTHS OF TERMINATION BAR.

**FB-9-D TERMINATION BAR**

**FB-9**

**VERTICAL FLASHING TERMINATIONS**

