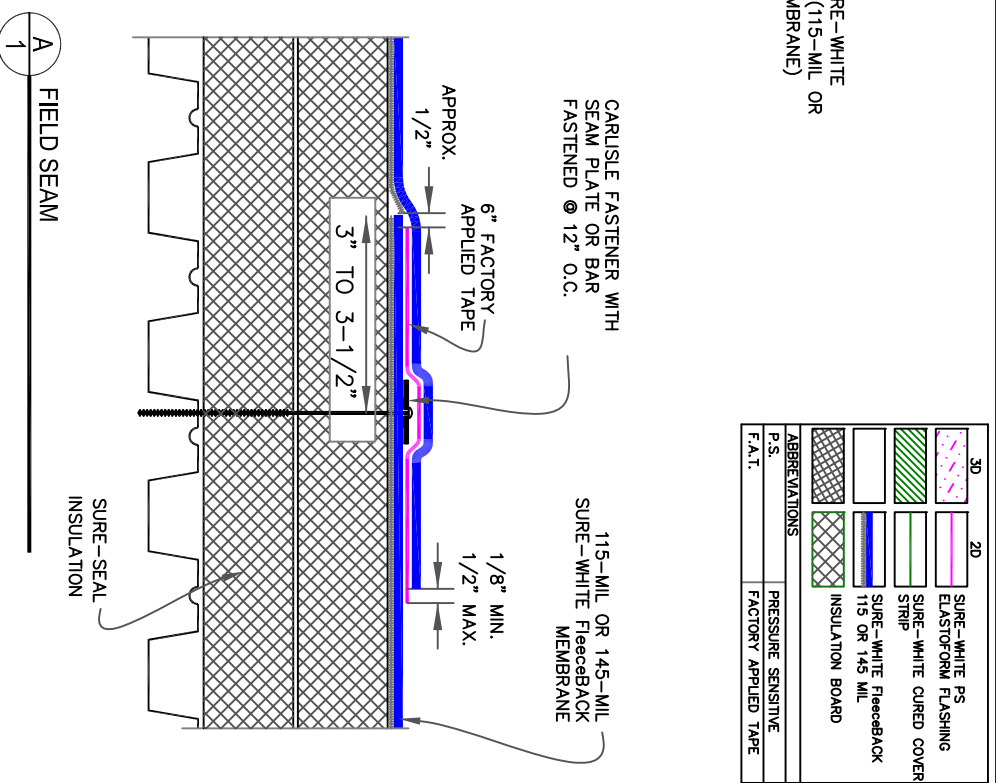
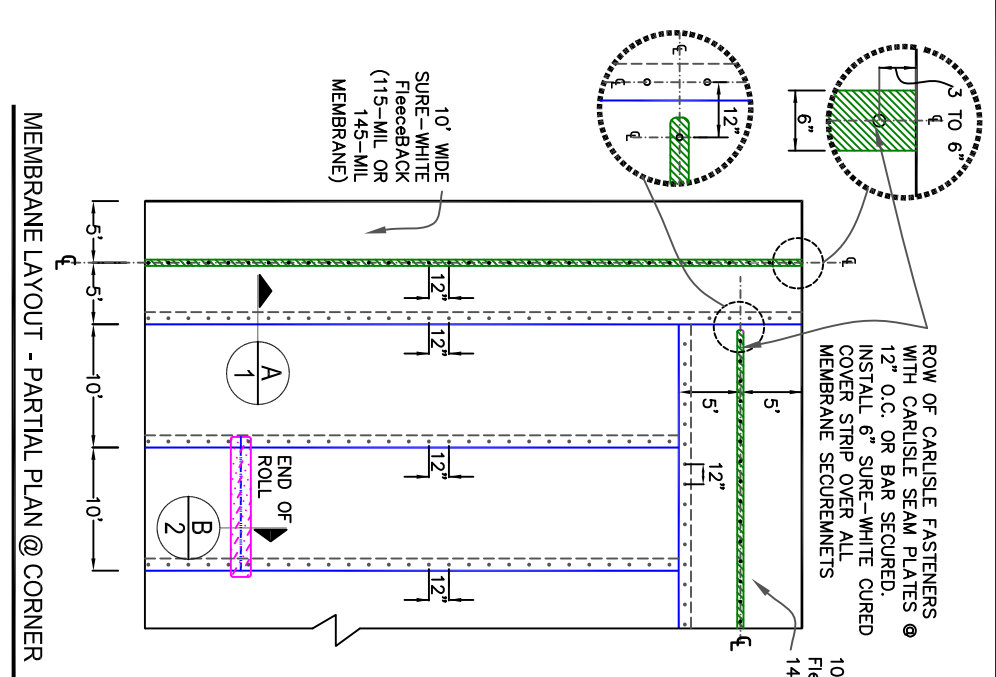


CONVERSION TABLES
MEMBRANE THICKNESS MIL=1/1000

MILS/mm	
30	0.762
40	1.016
45	1.143
50	1.270
60	1.524
72	1.829
75	1.905
80	2.032
80	2.286
100	2.540
105	2.667
115	2.921
120	3.048
135	3.429
145	3.683

DIMENSIONS

MCH/mm	
1/8"	3.18
1/4"	6.35
1/2"	12.7
3/4"	19.1
1"	25.4
1.25"	31.8
1.5"	38.1
1.75"	44.5
2"	50.8
2.25"	57.2
2.5"	63.5
2.75"	69.9
3"	76.2
4"	101.6
5"	127
6"	152.4
7"	177.8
8"	203.2
9"	228.6
10"	254
11"	279.4
12"	304.8
13"	330.2
14"	355.6
15"	381
16"	406.4
17"	431.8
18"	457.2
19"	482.6
20"	508
21"	533.4
22"	558.8
23"	584.2
24"	609.6
25"	635
26"	660.4
27"	685.8
28"	711.2
29"	736.6
30"	762
31"	787.4
32"	812.2
33"	837
34"	861.8
35"	886.4
36"	911
37"	935.6
38"	960.2
39"	984.8
40"	1009.4
41"	1034
42"	1058.6
43"	1083.2
44"	1107.8
45"	1132.4
46"	1157
47"	1181.6
48"	1206.2
49"	1230.8
50"	1255.4
51"	1280
52"	1304.6
53"	1329.2
54"	1353.8
55"	1378.4
56"	1403
57"	1427.6
58"	1452.2
59"	1476.8
60"	1501.4
61"	1526
62"	1550.6
63"	1575.2
64"	1600
65"	1624.6
66"	1649.2
67"	1673.8
68"	1698.4
69"	1723
70"	1747.6
71"	1772.2
72"	1796.8
73"	1821.4
74"	1846
75"	1870.6
76"	1895.2
77"	1919.8
78"	1944.4
79"	1969
80"	1993.6
81"	2018.2
82"	2042.8
83"	2067.4
84"	2092
85"	2116.6
86"	2141.2
87"	2165.8
88"	2190.4
89"	2215
90"	2239.6
91"	2264.2
92"	2288.8
93"	2313.4
94"	2338
95"	2362.6
96"	2387.2
97"	2411.8
98"	2436.4
99"	2461
100"	2485.6
101"	2510.2
102"	2534.8
103"	2559.4
104"	2584
105"	2608.6
106"	2633.2
107"	2657.8
108"	2682.4
109"	2707
110"	2731.6
111"	2756.2
112"	2780.8
113"	2805.4
114"	2830
115"	2854.6
116"	2879.2
117"	2903.8
118"	2928.4
119"	2953
120"	2977.6
121"	3002.2
122"	3026.8
123"	3051.4
124"	3076
125"	3100.6
126"	3125.2
127"	3149.8
128"	3174.4
129"	3199
130"	3223.6
131"	3248.2
132"	3272.8
133"	3297.4
134"	3322
135"	3346.6
136"	3371.2
137"	3395.8
138"	3420.4
139"	3445
140"	3469.6
141"	3494.2
142"	3518.8
143"	3543.4
144"	3568
145"	3592.6
146"	3617.2
147"	3641.8
148"	3666.4
149"	3691
150"	3715.6
151"	3740.2
152"	3764.8
153"	3789.4
154"	3814
155"	3838.6
156"	3863.2
157"	3887.8
158"	3912.4
159"	3937
160"	3961.6
161"	3986.2
162"	4010.8
163"	4035.4
164"	4060
165"	4084.6
166"	4109.2
167"	4133.8
168"	4158.4
169"	4183
170"	4207.6
171"	4232.2
172"	4256.8
173"	4281.4
174"	4306
175"	4330.6
176"	4355.2
177"	4379.8
178"	4404.4
179"	4429
180"	4453.6
181"	4478.2
182"	4502.8
183"	4527.4
184"	4552
185"	4576.6
186"	4601.2
187"	4625.8
188"	4650.4
189"	4675
190"	4700
191"	4725
192"	4750
193"	4775
194"	4800
195"	4825
196"	4850
197"	4875
198"	4900
199"	4925
200"	4950



3D	SURE-WHITE PS ELASTOFORM FLASHING
2D	SURE-WHITE CURED COVER STRIP
	SURE-WHITE FleeceBACK (115 OR 145 MIL)
	INSULATION BOARD
ABBREVIATIONS	
P.S.	PRESSURE SENSITIVE
F.A.T.	FACTORY APPLIED TAPE



SURE-WHITE FleeceBACK EPDM MEMBRANE
MECHANICALLY FASTENED (MF) SYSTEM

WHITE EPDM MECHANICALLY FASTENED FleeceBACKED MEMBRANE SYSTEM
SHEET NO. **1**
DATE: AUGUST 11, 2009